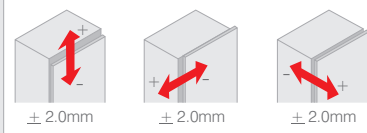


Dobradiça Caneco 26

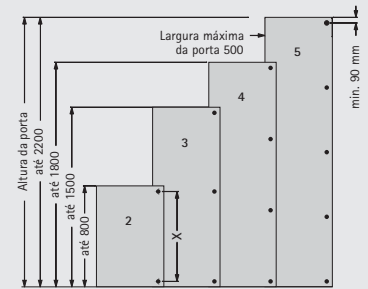


- Material: Dobradiça e calço em aço
- Acabamento: Zinco Branco/Niquelado
- Fixação: Parafusos
- Regulagem: Tridimensional
- Ângulo de abertura: 95°

Regulagens Caneco 26

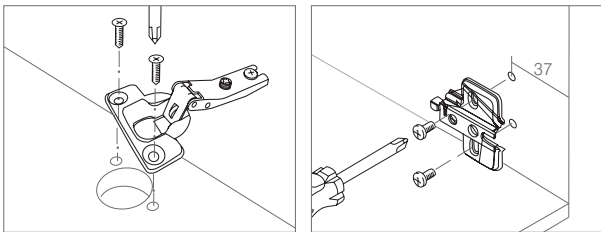


Referência de número de dobradiças por porta

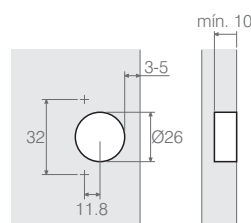


Valores de referência para chapas de 15mm de espessura e densidade 750kg/m³ podendo variar conforme instalação no móvel.

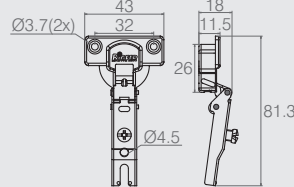
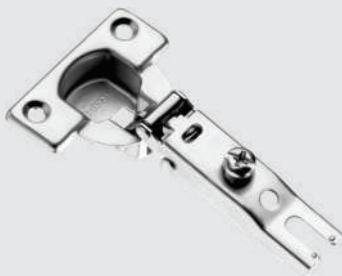
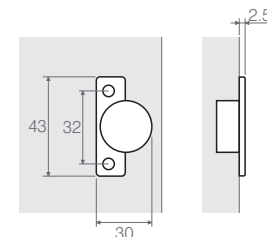
Forma de Montagem - Dobradiças 26 e Calços



Aplicação do caneco



Medidas do caneco

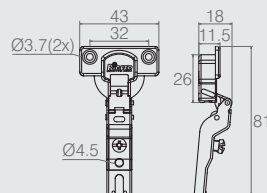
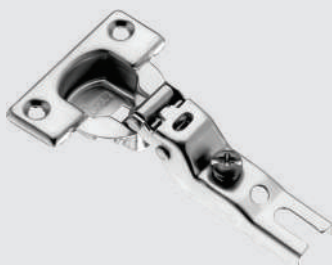


Dobradiça Caneco 26
Colo Baixo

07.05.301
com mola

07.05.415
sem mola

- Material: Aço
- Acabamento: Zinco Branco (411)

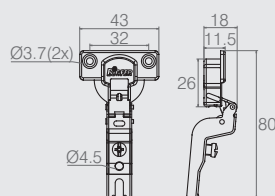


Dobradiça Caneco 26
Colo Alto

07.05.302
com mola

07.05.416
sem mola

- Material: Aço
- Acabamento: Zinco Branco (411)



Dobradiça Caneco 26
Colo Super Alto

07.05.305
com mola

07.05.448
sem mola

- Material: Aço
- Acabamento: Zinco Branco (411)