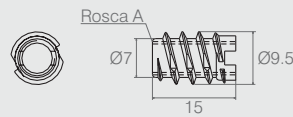


Bucha Soberba com Sextavado Interno Rosca Passante **Tabela**

Código	A	B	ØC	ØD	E (rosca)	Material
09.07.196	30	5	15	11.5	5/16"	Aço
09.07.481	30	4	12	9.2	1/4"	Zamac
09.07.315	25	7	15.6	11.7	5/16"	Aço
09.07.187	25	5	15	11.5	5/16"	Aço
09.07.441	20.5	4	12	9.2	1/4"	Aço
09.07.941	10	3	8	6	M4	Aço

- Material: Conforme tabela
- Acabamentos: Zinco Branco (411), Zinco Amarelo (413) e Sem Acabamento (901)

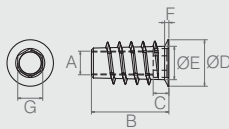
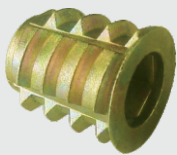
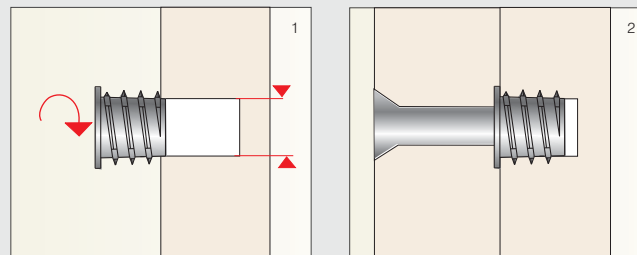


Bucha **Tabela**

Código	Rosca
09.07.440	M6
09.07.425	1/4"

- Material: Zamac
- Acabamentos: Zinco Amarelo (413) e Sem Acabamento (901)

Aplicação Bucha Americana

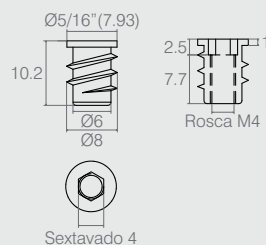


Bucha Americana **Tabela**

Código	A	B	C	ØD	ØE	F	G
09.07.212	1/4"	25	6	12	8.7	1.4	Sext. 6.3
09.07.200	1/4"	20	4	12	8.5	1	Sext. 6.3
09.07.199	1/4"	13	4	12	8.7	1	Sext. 6.3
09.07.214	1/4"	10	3.5	12	8.5	1	Sext. 6.3
09.07.289	5/16"	25	9.4	14.5	10.7	1	Sext. 8.2
09.07.201	5/16"	19	5	14.5	10.3	1	Sext. 8
09.07.253	5/16"	12.5	5	14.5	10.8	1	Sext. 8

Código	A	B	C	ØD	ØE	F	G
09.07.891	M4	10	3.5	8.3	6	1	Sext. 4.2
09.07.830	M6	30	4	12	9.2	1.7	Sext. 6.3
09.07.023	M6	20	4	12	8.5	1	Sext. 6.3
09.07.198	M6	13	4	12	8.7	1	Sext. 6.3
09.07.171	M6	10	3.5	12	8.5	1	Sext. 6.3
09.07.213	M8	19	5	14.5	10.8	1	Sext. 8

- Material: Zamac
- Acabamentos: Zinco Branco (411), Zinco Amarelo (413) e Sem Acabamento (901)



Bucha Soberba com Cabeça **09.07.665**

- Material: Aço
- Acabamentos: Zinco Branco (411) e Sem Acabamento (901)