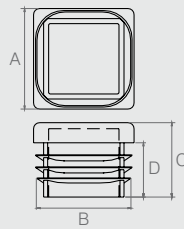


**Ponteira para Tubo Elíptico
(Espessura 1.2mm)**

05.03.078

- Material: Polímero
- Acabamentos: Preto (015) e Cromo (400)

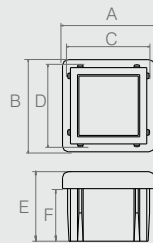
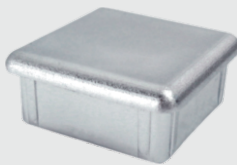


Ponteira Quadrada Anelada

Tabela

Código	A	B	C	D
05.03.100	26	24	18.5	13.5
05.03.170	20	17.7	13.5	12

- Material: Polímero
- Acabamentos: Preto (015) e Branco (005)



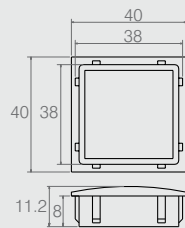
Ponteiras Quadradas

Ponteiras Retangulares

Código	A	B	C	D	E	F
05.03.090	30.5	30.5	27.5	27.5	13	10
05.03.082	21	21	18.3	18.3	17	14
05.03.046	15	15	13.6	13.6	9.5	7
05.03.197	20	20	18.4	18.4	13.5	11

Código	A	B	C	D	E	F
05.03.114	60.5	30.5	58	28.5	20	14.5
05.03.129	50	29.5	47.5	27.5	17.5	14
05.03.150	43	24	40.5	21.7	12	10
05.03.065	30	20	27.9	17.9	17.5	14.5
05.03.189	20	10	18.2	8.2	9	7

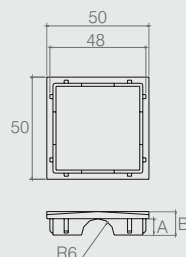
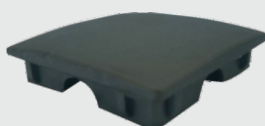
- Material: Polímero
- Acabamentos: Preto (015), Branco (005) e Cromo (400)



Ponteira 40x40mm

05.03.007

- Material: Polímero
- Acabamentos: Preto (015) e Cromo (400)



Ponteira 50x50mm

Tabela

Código	A	B	Descrição	Acabamento
05.03.006	8	11.5	Abaulada	Fosco
05.03.168	12	13.5	Reta	Polido
05.03.169	12	17	Reta	Fosco

- Material: Polímero
- Acabamentos: Preto (015), Branco (005), Alumínio (001) e Cromo (400)