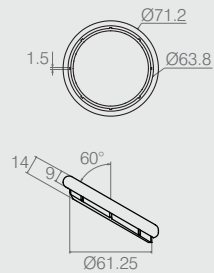


Ponteira com Ventosa

Tabela

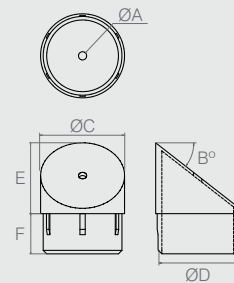
Código	ØA	Ventosa
05.03.126	11.9	Pequena
05.03.173	24	Grande

- Material: Polímero
- Acabamento: Preto (015)



Ponteira Ø2.1/2" para Tubo 60° 05.03.131

- Material: Polímero
- Acabamentos: Preto (015) e Cromo (400)

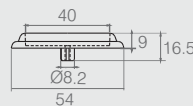


Ponteira para Tubo

Tabela

Código	ØA	B	ØC	ØD	E	F	Ø Tubo
05.03.145	5.5	37	48	46.3	40.5	23	1.7/8"
05.03.146	4.7	45	31.7	30.3	33.6	17.4	1.1/4"
05.03.187	9	37	48	46.3	40.5	23	1.7/8"
05.03.192	-	37	48	46.3	40.5	23	1.7/8"

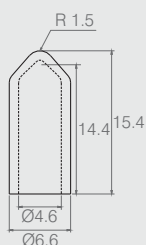
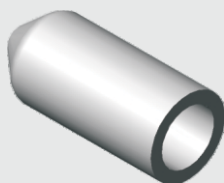
- Material: Polímero
- Acabamentos: Branco (005), Preto (015) e Cromo (400)



Ponteira com Pino

05.03.084

- Material: Polímero
- Acabamentos: Cromo (400) e Pintura Alumínio (505)



Ponteira Protetora

05.01.010

- Material: PVC
- Acabamentos: PVC Branco Especial (163), Preto (015) e Incolor (137)