

Aplicação

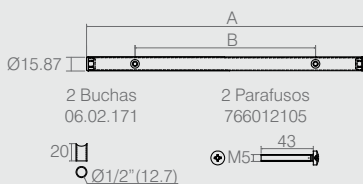
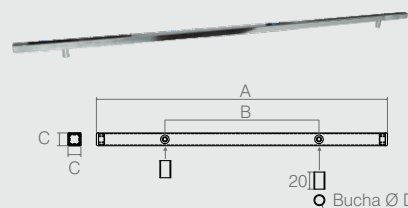


Puxador Tubo Quadrado

Tabela

- Materiais: Polímero e Aço
- Acabamento: Cromo (400)
- Buchas e parafusos acompanham o puxador

Código	A	B	C	ØD	Parafuso
03.04.044	1184	1024	15x15	12.7	PF CP M5x43 (2x)
03.04.038	995	800	15x15	12.7	PF CP M5x43 (2x)
03.04.055	900	800	15x15	12.7	PF CP M5x43 (2x)
03.04.040	800	640	15x15	12.7	PF CP M5x43 (2x)
03.04.058	732	672	15x15	12.7	PF CP M5x43 (2x)
03.04.050	608	448	15x15	12.7	PF CP M5x43 (2x)
03.04.057	500	384	15x15	12.7	PF CP M5x43 (2x)
03.04.087	484	384	10x10	7.9	PF CF M4x40 (2x)
03.04.043	380	320	15x15	12.7	PF CP M5x43 (2x)
03.04.086	292	192	10x10	7.9	PF CF M4x40 (2x)
03.04.049	252	192	15x15	12.7	PF CP M5x43 (2x)
03.04.042	220	160	15x15	12.7	PF CP M5x43 (2x)
03.04.041	188	128	15x15	12.7	PF CP M5x43 (2x)
03.04.046	156	96	15x15	12.7	PF CP M5x43 (2x)

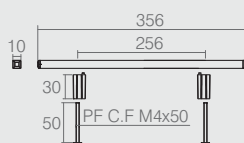
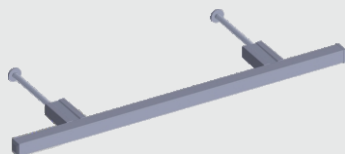


Puxador Tubo Cilíndrico

Tabela

- Materiais: Polímero e Aço
- Acabamento: Cromo (400)
- Buchas e parafusos acompanham o puxador

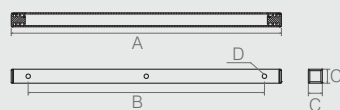
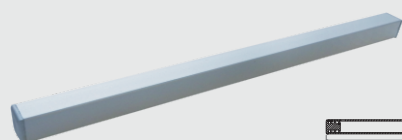
Código	A	B
03.03.024	600	448
03.03.023	400	288
03.03.026	240	128
03.03.025	208	96



Puxador Tubo 10x10mm

03.04.083

- Materiais: Polímero e Aço
- Acabamento: Cromo (400)



Puxador Tubo

Tabela

- Materiais: Polímero, Alumínio e Aço
- Acabamento: Anodizado Prata (461)

Código	A	B	C	ØD
03.04.198	700	642 (3 furos)	9.5	2.5 (3x)
03.04.116	183	160	9.5	3 (2x)