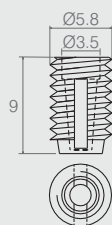
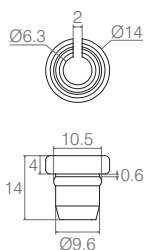

Bucha Cilíndrica
Tabela

Código	A	B	C	D
08.03.079	13	M6x12	10.8	10
08.03.141	11	M6x10	10.7	10
08.03.051	11	M6x10	10.5	9.8
08.03.085	9	M6x8	10.5	10
08.03.170	9	Soberba 6x8	10.5	10.5

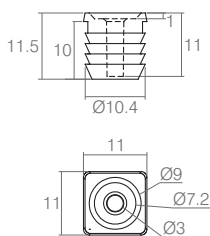
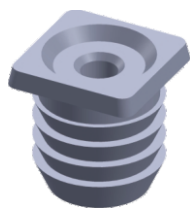
- Material: Polímero
- Acabamentos: Branco (005), Alumínio (001) e Preto (015)
- 08.03.141 e 08.03.079 para furo de Ø10.5
- 08.03.051, 08.03.085 e 08.03.170 para de Ø10


Bucha Cilíndrica Ø5x9
08.03.110

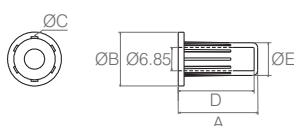
- Material: Polímero
- Acabamentos: Incolor (399) e Marfim (022)


Bucha Eixo
08.03.398

- Material: Polímero
- Acabamento: Preto (015)


Bucha de Fixação para Dobradiça
08.03.358

- Material: Polímero
- Acabamento: Branco (005)


Bucha Fixadora
Tabela

Código	A	ØB	ØC	D	ØE
12.05.009	25	16	11.5	23	10
12.05.069	25.5	16	13.3	22.5	12.5

- Material: Polímero
- Acabamentos: Preto (015) e Branco (005)