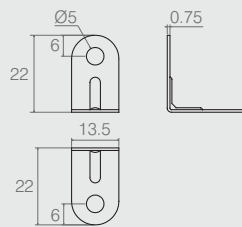


Cantoneira MC

Tabela

Código	°A	B	C	D
04.08.025	90	23	21.3	31.3
04.08.052	135	22	24.5	32
04.08.446	80	22	26	32

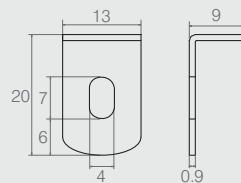
- Material: Aço
- Acabamento: Zinco Branco (411)



Cantoneira

08.02.006

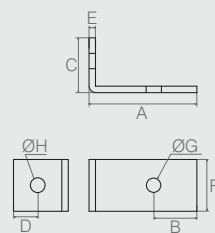
- Material: Aço
- Acabamento: Zinco Branco (411)



Cantoneira "L"

08.02.106

- Material: Aço 0.9
- Acabamento: Zinco Branco (411)

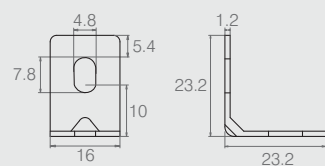
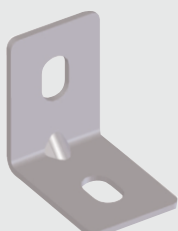


Cantoneira

Tabela

Código	A	B	C	D	E	F	ØG	ØH
08.02.261	40	8	16.2	4.5	2.65	17	6.5 esc. 8	6 esc. 8
08.02.054	31.6	11.5	31.6	11.5	2.65	22	5	5
08.02.059	28	13	28	13	1.9	13	4 esc. 6	4 esc. 6
08.02.002	25	10	12.7	5.6	1.5	12	3.5	3.5

- Material: Aço
- Acabamento: Zinco Branco (411)



Suporte Cantoneira 16x23mm

04.08.151

- Material: Aço 1.2
- Acabamento: Zinco Branco (411)