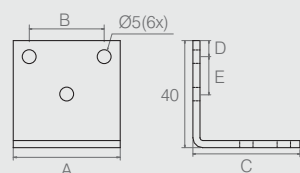

**Cantoneira**
**Tabela**

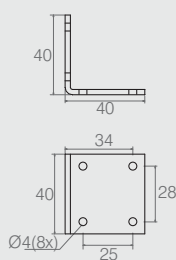
Código	A	B	C	D	E	F	G	H
04.08.241	34	34	35	1.5	5	26	4	4
08.02.290	20	25	50	1.9	10	32	5 esc. 8	5

- Material: Aço
- Acabamentos: Zinco Branco (411) e Epóxi Preto Fosco (604)

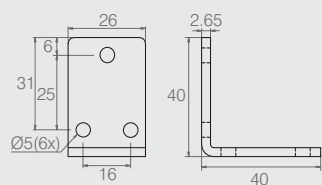

**Cantoneira 6 Furos**
**Tabela**

Código	A	B	C	D	E
04.08.236	66	32	30	10	10
08.02.102	40	28	40	6	14

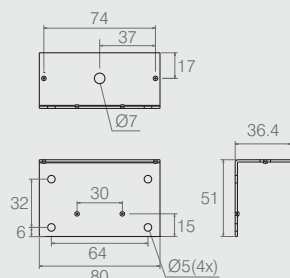
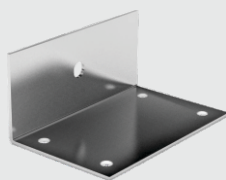
- Material: Aço 2.65
- Acabamento: Zinco Branco (411)


**Cantoneira 8 Furos**
**08.02.084**

- Material: Aço 2.65
- Acabamento: Zinco Branco (411)


**Cantoneira 40x40**
**04.08.088**

- Material: Aço 2.65
- Acabamento: Zinco Branco (411)


**Cantoneira**
**04.08.288**

- Material: Aço 1.5
- Acabamento: Zinco Branco (411)