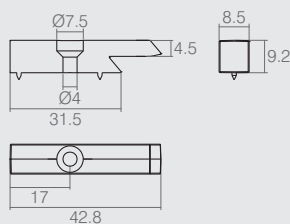


Chapa de Regulagem

04.04.421

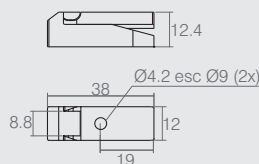
- Material: Aço 1.9
- Acabamento: Zinco Branco (411)



Conector Oculto

08.04.273

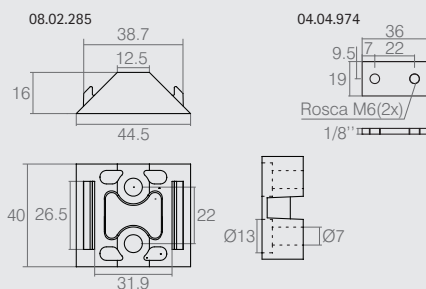
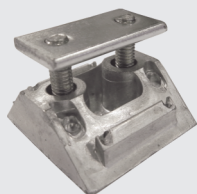
- Material: Zamac
- Acabamento: Zinco Branco (411)



Conector Oculto

08.04.203

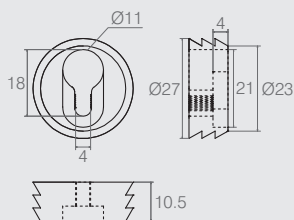
- Material: Nylon
- Acabamento: Preto (015)



**Cantoneira de Engate
Chapa 3/4"x36mm**

**08.02.285
04.04.974**

- Usar com P.C.C. Allen M6x30mm - vendido separadamente
- Materiais: Zamac/Aço
- Acabamentos:
 - 08.02.285 Sem Acabamento (901)
 - 04.04.974 Zinco Branco (411)



Suporte para Fixação de Painel

08.03.256

- Material: Polímero
- Acabamentos: Preto (015) e Branco (005)